

**CARM Toronto Chapter - What are you working on?****February 12, 2018**

Hello everyone:

It's winter and since our last members' letter we have had some wonderful cold, snowy, Canadian days over these last couple of months - the perfect time to plan, sketch, dream, or work on our model railways. We have received many letters from our members doing just that, so, without any delay, grab some tea or coffee and enjoy reading about what some of our fellow members have been doing over the last couple of months.

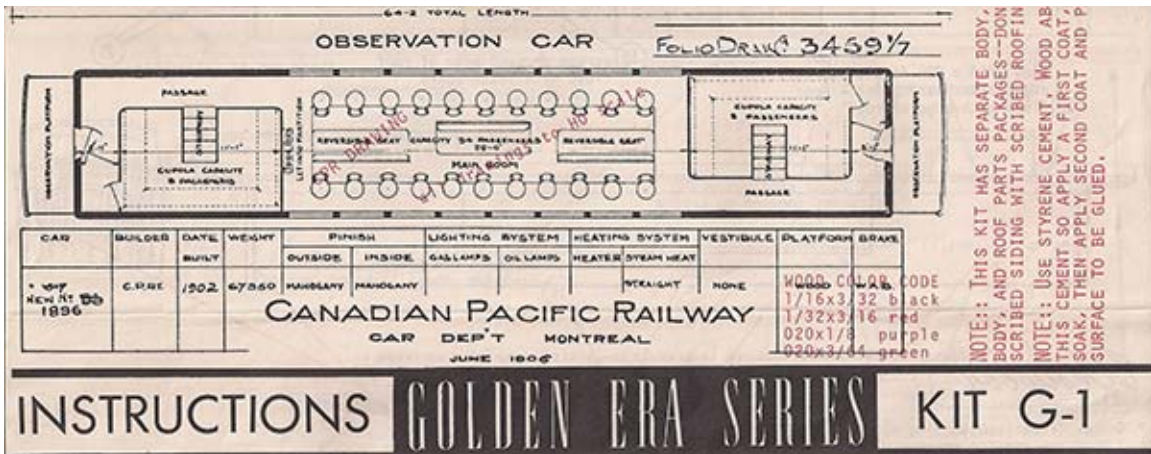
1. **Malcolm Back's New HO Canadian Pacific Dome Car Kit:** I always find it exciting when you find that "great something" at a store or train show that fits what "you" like to model. Malcolm Back recently found a second hand kit of a Westwood *Golden Era Series* "Dome Car". He writes in to say:

*A recent visit to George's Trains led me to find this unusual railway prototype model at the back of one of the display cases. It was partially assembled, presumably from an Estate sale.*



(Kit instruction image submitted by Malcolm Back)

The kit was manufactured by "Westwood, PO Box 2412, Fort Wayne, Indiana. It was Kit G1 retail \$6.95, CPR 1902 "Dome" Car, a limited run of 1902 (year prototype built).



(Kit instruction image submitted by Malcolm Back)

I have been unable to learn much about this company. From the price and the quality of the instructions, I assume it was produced in the 1970's if not earlier.



(Photo of Malcolm's finished kit by Malcolm Back)

2. **Richard Morrison's New Trestle Bridge:** Richard's Union Pacific HO layout continues to progress with some changes and this month he shares a photo of his beautiful new trestle bridges that we saw on his workbench during our CARM tour of his layout last December. Richard writes:

*In December I built two curved trestles from kits. The first (rear) was a John Rendall kit from JV Models, which took about 30 hours of work. The front one is a Campbell kit that took about 25 hours. I could go on for pages about how I built them and bore everyone. Instead, any modelers seeking advice on building trestles may contact me, since I've built quite a few (including N scale). Don't forget the most important tool on your workbench: patience.*



(Photo by Richard Morrison)

3. **Dave Fleming's Recent Project Is at 1:1 Scale:** Dave is a CARM Toronto member and he is also a volunteer with the Toronto Railway Museum. Dave has been helping to restore the interior of the Cape Race Passenger Car (Scale 1:1) with the restoration team and he is presently working on the restoration of a brass bed from the car. He describes the process he is using to restore the pitted rusty brass as follows:



*The light weight battery operated drill is great. Use on high speed moving toward grimy sections. Clean spinner, recoat and repeat as necessary. Take your time.*

1. Paste for burnishing brass plated tubes.
2. A little dab will doya.
3. Coat cloth spinner.
4. Coat brass by slowly rotating spinner.
5. Grungy brass tube.
6. Finished brass bed .tube
7. Clean spinner frequently using sanding pad.
8. Unused cloth spinner.
9. Used cloth spinner.

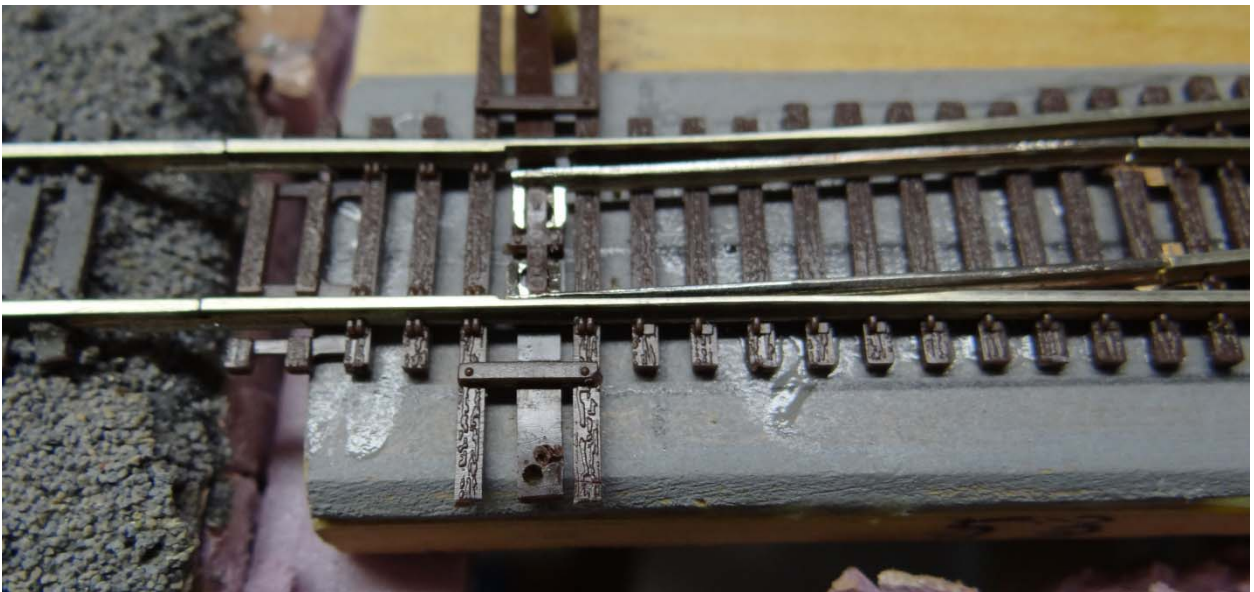


*I used a paste privately made by a guy who has now retired from making that great paste. It was very cheap and he gave me the last can free. Alternatives might be Brasso or other abrasive pastes from Canadian Tire he suggested. I have enough for this project.*

*I hope it will be the jewel of Cape Race.*

4. **Willie Waithe's CN Weston Track Switches:** Willie's new layout continues to progress with long train test runs on the track and through the switches. He writes:

*I am working on repairing track defects found while testing the new Weston Sub. I had chosen Micro Engineering code 55 flex track and 50 of the turnouts for the new layout because of their superior appearance. However, most of the Micro Engineering turnouts which we had installed turned out to have a manufacturing defect: they were out of gauge due to wear on the molds used to cast the turnouts. Although ME offered to replace them, they were already installed and soldered into the tracks, so we decided that it was less work to file the oversize stock rails in situ. We are still finding some that need further filing. In addition, some have had to be replaced. I am replacing any defective turnouts with Atlas as they are better made overall (see attached photograph of an Atlas replacement).*



(Photo by Willie Waithe)

5. **James Raser Shows the CN Weston Subdivision Tunnel Access Road on Willie Waithe's layout:** Below is a sequence of photos showing the lift-out road over the tunnel on Willie Waithe's layout. The road is made of Styrofoam, the sidewalks are made from a sheet of Evergreen tile patterns, road markings are added with Woodland Scenic road markers, and paint.



CN WESTON SUBDIVISION - TUNNEL ACCESS

THE TUNNEL ON THE LAYOUT IS ACCESSED BY A LIFT OUT ROAD. THIS GAVE US THE OPPORTUNITY TO TRY OUT SOME "WOODLAND SCENIC" ROAD MARKER PENS. ALONG WITH THE EVERGREEN TILE SHEETS USED FOR SIDEWALKS, AS SUGGESTED BY THE GUYS AT PANTHER HOBBIES, THE RESULT WAS VERY SATISFYING. MY HANDS ARE GETTING A LITTLE SHAKY THESE DAYS, BUT WITH THE HELP OF A RULER, THE WORK WAS FAST AND EASY. THE CROSS WALK IS AT THE BACK OF THE ROAD AGAINST THE WALL SO I USED IT AS A CHANCE TO TRYOUT A LITTLE MORE CREATIVE WORK LIKE THE CROSSWALK.

(Photos by James Raser)

6. **Mike Walton's 187th Operating Session Post Operating Report:** Mike emailed his latest post operation report from his 187<sup>th</sup> operating session of his *Lostock Junction Railway*.

Here is the beginning of Mike's report #187 along with my favourite photo from him at the end of this small sample from the beginning of Mike's report ...

*12 Operators and 10 visitors braved the cold (-17°C) for this annual fun event. We had a wonderful variety of food, with lots left over. Thank-you to all the delicious food donations. New Year is a bad time to make resolutions, I think I'll may have to eat my way out of Christmas before making any serious resolutions J.*

*The objective was to have as much fun as possible by running as many trains as possible. 30 different trains over a 2 hour period. mission accomplished.*

*The visiting stock was as follows.*

<i>Gerry Taylor</i>	<i>Bachmann "Hogwarts Castle" North American version with 5 Hogwarts coaches, James the Thomas the tank Red Engine also headed the Bachmann Hogwarts express with five coaches</i>
<i>John Rowe</i>	<i>Thomas with coaches and wagons</i>
<i>David Knight</i>	<i>CNR GMD-1 with 3 coaches</i>
<i>Nigel Doran</i>	<i>Dapol Hunslet in BR Black.</i>
<i>Alan Farmer</i>	<i>6 Coach GO Transit train with a mix of the new and old colour schemes. CN Royal Hudson with 4 heavyweight CN coaches CN Alco RS3 with a CN Private car/Veranda coaches</i>
<i>Terry Brown</i>	<i>North American GP 9 with 4 GWR coaches.</i>

*Terry's loco hadn't been used for some time and was drawing a lot of current (the overload bulbs were glowing brightly). After a little light oil was added to the wheel bearings. the lights had a dull glow but the engine ran perfectly. Other than that all visiting stock ran well.*

*My selection of stock was as follows, mostly non-British brought out for their annual run.*

**Canadian Stock**
**1 Diesel**

CN	RDC	Bo-Bo	D-102 Budd Railcar	Rapido
----	-----	-------	--------------------	--------

**Thomas the Tank Stock**
**1 train**

Sodar	3F sort of	0-6-0	Thomas the Tank	6 assorted Thomas carriages
-------	------------	-------	-----------------	-----------------------------

**German and Austrian Stock**
**Multiple Units**
**4 Electrics - 2 Diesel**

DB	SVT 137	DMU	Flying Hamburger - DRG Bauart Hamburg	Purple - 2 car unit
DB	420	EMU	1972 Munich S Bahn - Red	Red 3 car unit
DRG	ET 88	EMU	Rübezahl - Railcar	Purple and Cream - 1 car unit
DRG	VT 137	DMU	Dieseltriebwagen (Diesel Railcar)	Red and Cream - 2 car unit
DB	ET 87	EMU	Chocolate & Cream Railcar	3 car unit
DB	ET 65	EMU	S-Bahn - Maroon -	4 car unit

**Festzug**
**1 Steam Train**

DB	Ptl 2/2	0-4-0	Glaskasten Loco with party band wagon and open vestibule mail coach	
----	---------	-------	---	--

**Rolling Stock**
**33 Coaches - 18 wagons**

Orient Express	9 coaches - 8 wheel
DBR (post WW2)	9 coaches - 8 wheel
Pre WW2 Assorted Set	6 coaches - 4, 6 and 8 wheels
Pre WW2 Assorted Set	4 coaches - 4 and 6 wheels
Pre WW2 Assorted Set	5 coaches - 4 and 6 wheels
Assorted Goods Train	18 wagons

**Locomotives**
**9 Steam**

K.Bay	BR96	0-6-6-0	Bavarian Mallet - Green
K.Bay	s-18	4-6-2	Bavarian Royal State Railway - Olive green
DB	BR012	4-6-2	Schnellzuglokomotive (Express Loco)
BBÖ	310	2-6-4	Austrian State Railway
DB	BR 55	0-8-0	Prussian G8.1 (BR55)
DB	BR 95	2-10-2	Halberstadt-Blankenburg (HBE)
K.Bay	DXII	4-4-2	Palatine Rly Tenderlok (Tank) -Brown
DB	Ptl 2/2	0-4-0	Glaskasten - Green
K.W.St.E	T3	0-6-0	Tenderlok (Tank)

*Some of my stock was set out on the network but most of it sat in Windermere at the start of the session, see below.*





(Photo by Mike Walton)

*All my stock ran well but I found my Thomas the Tank passenger set had been removed at the start of the gradient out of Lostock Junction, see snag report #2.*

*One operator reported. The Windermere crew certainly had a good time; there were few moments of inactivity [unless you count the Prussian G8.1 (BR55) locomotive which ran into the turntable pit]. Every train in Windermere spent some time on the Network, quite a few even returned for a repeat, after the locomotive went for a spin on the turntable.*



(Photo by Mike Walton)

*"What a great photo!" - James Rasor, Editor*

**...and the Report continues.** (Report and Images by Mike Walton) If you would like to see a full copy of Mike's report, let me know and I will forward your request to him.

7. **Upcoming Events You Might Want to Know About:** Winter is upon us and so are several train events to go see.

This weekend is the last weekend for the **Model Railroad Club's O scale Open House** – I highly recommend this as a wonderful family event – please go if you have the time.

Check-out the other events listed below too – there is an event for each month coming up!

- February 4, 11, 18 & 19/2018 - **Model Railroad Club of Toronto, Annual Open House Days** - <http://www.modelrailroadclub.com/>
- February 10/2018 - **Burlington Model Railroad Show** - <http://www.burlingtonmodelrailwayclub.ca/>
- March 17/2018 - **Toronto Railway Prototype Modellers Meet** - <https://torontoprototypemodellers.wordpress.com/>
- April 21/2018 - **Ontario Narrow Gauge Show** - <http://www.narrowgaugeontario.com/>
- April 28 & 29/2018 - **Great British Train Show** - <http://www.theplatelayers.org/gbts2018/gbts2018poster002.jpg>

8. **Ian McIntosh's Model Train and Train Events:** If you are looking for more train related events, Ian edits and runs a wonderful Model Train and Train Events web page, a great source for planning your next train event. It is a wonderful resource web site setting out the upcoming model train and train events by each month for the coming year. This is a great all-in-one-place resource for anyone to help make future plans on things you may be missing out on!  
<http://home.eol.ca/~ianmc/2018ONshows.htm>

\*\*\*\*\*

We would like to hear from everyone about what *CARM Toronto chapter members* have been working on!

1. **Send me a photo** of your:
  - present model railway project,
  - or your most recent prized purchase,
  - or your layout,

- or your current scratch building project,
  - or your favourite rolling stock,
  - or your latest operating session,
  - or your research sketches,
  - or your custom track build,
  - or your first decoder install,
  - or your latest weathering,
  - or the most recent disaster that happened,
  - or your landscape project,
  - or your lighting project,
  - or the area you just pulled apart to start all over again!
  - or any model railway related item that you have been working on.
2. **Include a brief description**, 75 to 100 words maximum, or less if you want, that's okay too!
  3. **Don't have a camera?** That's okay; just send me a 75 to 100 word description of what you are working on. You do not always need a picture, but we do want to hear from you!
  4. **Send it to me at:** [CARMtoronto.jamesrasor@gmail.com](mailto:CARMtoronto.jamesrasor@gmail.com) .

I will then take the information, put it together with the other submissions, and issue it along with the other members' news every few months.

Let us know what **you** are working on, have fun, and ***stay in touch!***

Yours truly,

James Rasor, Secretary

**CARM Zone 2 - Toronto Chapter**

For more information on the *Canadian Association of Railway Modellers* go to <http://www.caorm.org/>