

**CARM Toronto Chapter - What are you working on?**

**June 23, 2018**

Hello everyone:

It's summer and since our last members' letter we have had chapter tours, lectures, flea markets, and lots of email submissions for the new "What are you working on?" letter. It being summer now I think I'll change my usual greeting and suggest that you grab some "iced tea" or coffee and enjoy reading about what some of our fellow members have been doing over the last couple of months.

1. **Malcolm Back - A New Gantry Train on the NCR:** Malcolm finished this kitbash project in the early spring and he writes the following about it: *This gantry crane was just installed for the shop crews at Mule Shoe Meadows on the Nipissing Central Railway. The NCR, owned by the CNR, is an imaginary bridge route in Northern Ontario between Foleyet on the CNR Transcontinental mainline to the south and*



(Photo by Malcolm Back)

*Kapuskasing on the Ontario Northland Railway to the north. There is also a connection with the Canadian Pacific Railway from Sultan on the CPR Transcontinental mainline.*

*The gantry crane was kit-bashed from a Hamilton Models kit. Locomotive 7339 is an USRA 0-6-0 CNR switcher from the Heritage Proto 2000 line.*

- 2. **CARM Toronto Chapter February Lecture - Model Railroading in Small Spaces:** Stephen Gardiner and James Rasor presented a joint lecture to the chapter members at City Hall on modelling in small apartments. A joint slide show presentation showcasing James' and Stephen's small apartment modelling work desks and their storage solutions was given to the members. Side tables were laid out with samples of their models, tools, travelling work desks, and other items related to their lecture for everyone see.



(Photo by James Rasor)



3. **Dave Fleming – New Barry Layout:** Dave is a CARM Toronto member but he travels to Barry to work on a new layout with a newly formed club. He writes: *I have joined the Barrie Railway Modellers who have a construction meeting and general monthly meeting in Barrie on Tuesday nights from 6:30pm to 9pm followed by a visit to Tim Hortons for casual socializing. Progress on the layout has included selection of the final design, wood structure completed, routing cut outs completed and now currently laying roadbed, track and installing wiring.*



(Photos by Dave Fleming)

4. **Willie Waithe's Ship IT Operating Program:** Willie's new layout continues to progress and he describes the program he is using for operating sessions: *I am almost finished re-organising the Ship It operating program. The program generates switch lists based on the needs of industries. To set up the program, the needs of industries (shippers and consignees for each industry) are entered into a database and a program called the Balancer goes over the database for multiple iterations and looks at the*

*numbers I have entered. A report is then generated listing any discrepancies (e.g. too many product X from an industry or too few consignees for that product) Once I make corrections required, the balancer is repeated and further corrections made until a grade of 1 or lower is achieved.*

*The previous database we have been using required that one had to wait until the first train returned from switching industries with freight cars needed for the next train. Although this is a realistic sequence, the program left operators (impatiently) waiting before they could get to run a train. The solution was to generate two independent databases so that multiple operators could start operating two sets of trains. Fortunately, the Ship It program has four files permitting up to four scenarios for industrial switching.*



(Photo by Ian McIntosh from Willie Waithe May 2018 Operating Session)

*So, the past few weeks, I have been setting up scenarios in the databases for two sets of transfer runs and way freights. This is not so simple as one has to partition the list of freight cars (145) according to AAR types needed for the various industries and assure that there are no overlaps in the distribution among the two operating scenarios. In the program, all 145 cars are on a single list. Partitioning is done by marking a specific car as "not available" in one database and "available" in the other. If this is not done carefully for each car, there would be competition and two databases would call up the same car in the switch list.*

*The longest parts of the procedure has been the balancing (one may go from a grade of 16 to 0.08... after a few or many adjustments of the database, and the distribution of the freight cars among the two databases. We now have the two independent switching programs ready and the switch lists, starting car positions and yard arrival lists are printed and ready to go.*

- 5. **Ian McIntosh visits and operates on the Willie Waithe's CN Weston Subdivision layout:** In May, Ian visited Willie's layout for an operating session to help the operating crew test run Willie Ship It operating system updates. Ian writes: *On Sunday May 20 half a dozen Toronto Chapter members gathered at Willie's layout condo for a 4 hour operating session and lunch. A good time was had by all! As the photos show, the scenery is coming nicely.*



(Photos by Ian McIntosh)



6. **Mike Walton's 194th Operating Session Post Operating Report:** Mike emailed his latest post operation report from his 194<sup>th</sup> operating session of his *Lostock Junction Railway*. Mike always has an interesting report and it is obvious he puts a good deal of time into it. If you would like to see a full copy of Mike's report, let me know and I will forward your request to him. For this letter, I wanted to show everyone the images that are in his report along with the image captions showcasing the marvelous editing he does. It's a bit of tease to make you want to see the whole report!

**The operators were as follows.**

		Network						Windermere				
		Lostock	Down line & Inner Loop	Outer Loop & Up line	Wigan / Horwich	Preston / Blackpool	Network Traffic Controller	Winderm. Traffic Controller	Station Master	Yard Master	Shed Operator	Goods Yard Operator
194	AM (R1)	Gerry Taylor	Mike Walton	John Rowe	Alan Farmer	David Knight	Mike Walton	Mark Earley	Denzel Sterling	David Youngs	Keith Martel	Phil West
	PM (R2)	Alan Farmer	Mike Walton	Denzel Sterling	John Rowe	Gerry Taylor	Mike Walton	Mark Earley	David Youngs	Phil West	Keith Martel	David Knight

**Visiting trains.**

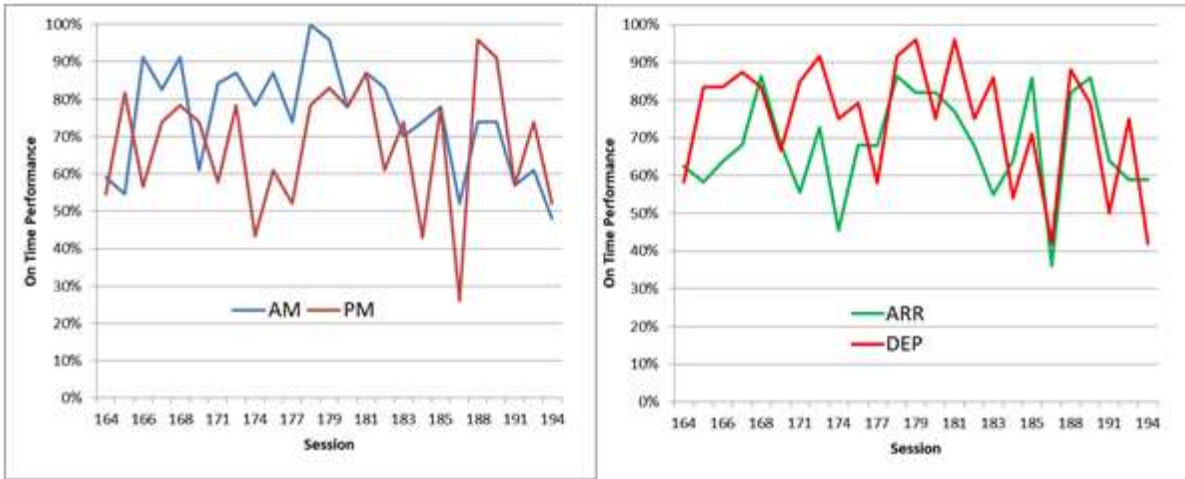
Owner	Morning				Afternoon			
	Description	Eng ID	Train #	Description	Eng ID	Train #		
D Knight	P Class with 2 Suburban Coaches	DK1	6	P Class with 2 Suburban Coaches	DK1	6		
				A Barclay 0-4-0 St	DK2	Shunt		
G Taylor	BR Britannia with 7 parcels train	GT1	Floater 1	BR Class 40 with 7 parcels train	GT2	Floater 1		
D Sterling				Scot Rail – 3 car DMU	DS1	3		
A Farmer	BR 1F 0-6-0 with 3 suburban coaches	AF1	5	BR 3 Car DMU	AF2	5		
				BR Class 31 (with Mike's train)	AF3	2		
J Rowe	BR A4 with 3 Flying Scotsman B&C coaches	JR1	4	BR 2-HAL EMU	JR2	4		
P West				BR Lima Warship (3.5 mm) with 7 Coaches	PW	Floater 2		

**Lostock Engines – We ran the #3 Roster which consists of the following 16 units.**

Rost ID.	Passenger Trains			Goods Trains	Rly	BR Class	Wheel Arrgmt	Loco. No.	Description	Maker	Box
	1 & 2	3 & 4	5 & 6								
XP1	Heavy				LMS	8XP	4-6-0	6127	Parallel Boiler Scot "Old Contemptables"	Mainline	1
XP2	Heavy				LMS	5XP	4-6-0	5563	Jubilee "Australia" Maroon	Bachmann	1
XP3	Heavy	Light			MR	4P	4-4-0	1012	Fowler Compound	Gem	2
XPD	Heavy		PM	Long	BR	55	Co-Co	9006	Deltic "The Fife & Forfar Yeomanry"	Lima	5
LP		Light	Local	Short	LMS	2P	2-4-2T	10713	L&YR Suburban Tank Crimson	Bachmann	2
MT1		Light	Local	Short	LMS	4MT	2-6-0	3001	Ivatt Mogul	Bachmann	3
MT2		Light	Local	Short	LMS	2MT	2-6-0	6404	Ivatt Small Mogul	Bachmann	3
MT3		Light	Local	Short	LMS	4MT	2-6-4T	2691	Fairburn Tank	Bachmann	3
MT4			Local	Short	MR	2F	0-6-0	2650	Kirtley	Gem	4
MT5			Local	Short	LNWR	2F	0-6-0	none	Cauliflower Goods	Gem	4
MT6			Local	Short	LNWR	2F	0-6-2T	801	Webb Coal Tank	Ks	4
HG2	Long Goods				LMS	8F	2-8-0	8453	Stanier 8F (no front coupling)	Hornby	
HG3	Long Goods				LNWR	7F	0-8-0	9449	Class G2a in LMS Black	Bachmann	
SS	AM or PM			Shunt	L & Y	1F	0-6-0T	11532	L&Y Aspinall Class 23 Saddle Tank	00 Works	5
SD	PM only			Shunt	MSC	4wDH	0-4-0	DH16	Sentimental Shunter Manchester Ship Canal	Hornby	5
SP	Station Pilot				LMS	4F	0-6-0	4454	Fowler	Airfix	

### Session Performance

The overall performance was as indicated below.



The variances to schedule are shown below

A rr.	Due	Dep.	Var.	Comments
<b>Morning Session</b>				
	10:40	3	-3	Dep. Early
	10:45	2	-2	Dep. Early
	10:47	LE	-3	Dep. Early
4	10:50		3	Arr Late
5	10:55		-1	Arr Early
	11:00	4	-3	Dep. Early
	11:05	5	-3	Dep. Early
	11:07	A1	16	Late - new goods yard operator -
	11:30	2	3	Dep. Late
	11:45	A2	none	New goods yard operator -
	11:50	3	-2	Dep. Early
2	11:55		4	Arr Late
3			9	
<b>Afternoon Session</b>				
4	13:00		3	Arr. Late
P1	13:12		17	Arr. Late
3	13:25		5	Arr. Late
	13:30	6	3	Dep. Late
	13:32	P1	18	Dep. Late - P1 arrived 13 min late
	13:55	4	-1	Dep. Early
	14:10	1	6	Dep. Late
2	14:15		9	Arr. Late
	14:20	P2	9	Dep. Late
6	14:25		3	Arr. Late
4	14:30		4	arr. Late
6			5	

**Windermere Traffic Control.**  
*Mark is really getting to grips with the role of Windermere Traffic Controller.*

Lostock Junction Railway Windermere Traffic Controller's Record for Session #						Morning Session	
Locn.	Arr.	Due	Dep.	Act.	Var.	Planning Notes	Comments
3	1	10:35					
1		10:40	3				
2		10:45	2				
3 or Sho		10:47	LE				
3	4	10:50					
2	5	10:55					
Yard	A1	10:57					
3		11:00	4				
2		11:05	5				
Yard		11:07	A1			Train #1 is due in 30min	
2	6	11:10					
4		11:15	1				
2		11:20	6				
2	2	11:25					
Yard	A2	11:27					
2		11:30	2				
3	1	11:35					
2	3	11:40					
Yard		11:45	A2				
3 or Sho		11:47	LE				
2		11:50	3				
2	2	11:55					
3		12:00	1				
Lang Goods			in				
			out				
Lang Goods			in				
			out				

**New Snags.**  
*After the session the Sin Bin was almost empty.*

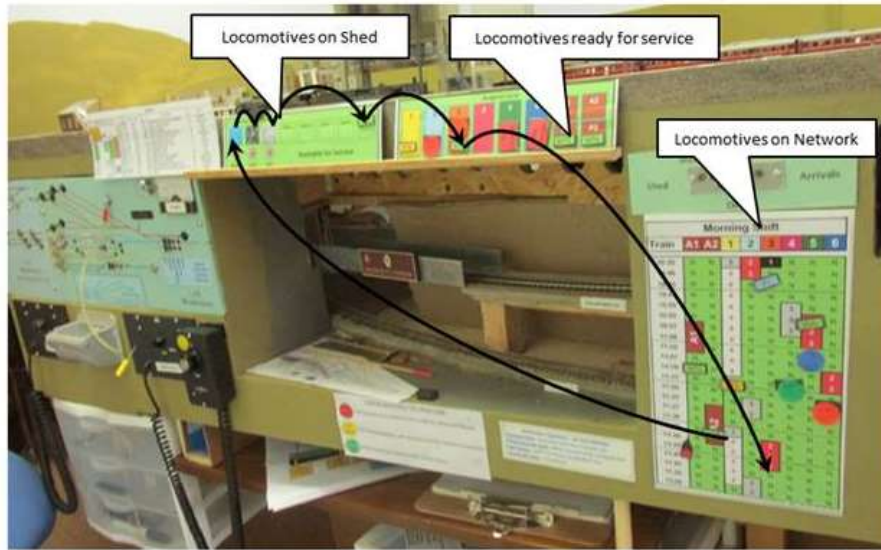




**Motive Power Management System.**

The arrangements below were created for the 186<sup>th</sup> session and allowed us to play with the concept. However experience has shown that the three panel arrangement is too complex.

Token is moved to reflect the location of each locomotive on Layout



The experiments conducted and experience gained over the past few sessions has led me to create the improved design below which should be in place for the next session.

Windermere Shed – Motive Power Management System									
	1	2	3	4	5	6	A1/P1	A2/P2	L. Eng.
On Shed	PM XPD	PM	PM DS1	PM DMU	PM JR2	PM	PM AF2	PM	PM SD
	11:15	10:45	10:40	11:00	11:05	11:20	11:07	11:45	10:47
	12:00 14:30	13:45	13:40	13:55	14:05	13:30	13:12	14:40	11:47 14:02
On Network	XP1	XP2	MT1	MT2	JR1	DK1			
	10:35	11:25	11:40	13:00	10:55	11:10			
	11:35 14:00	14:15	13:25	14:30	13:50	14:25	10:57 13:12	11:27 13:42	
At Coaling Stage			MT6	H. Goods		HG2	HG3		
Spare		G. Shunt.		SS	L. Eng.				

***Interchange Wiring Improvements.***

*As far as I'm aware there were no more problems. The realignment of the micro-switch, see below cleared the only snag following the wiring changes .*



***Scenery Development – Those Dark Satanic Mills..***

*Summer is here so for the time being the garden railway has a higher priority.*



**...and the Report continues.** If you would like to see a full copy of Mike's report, let me know and I will forward your request to him.

(Report and Images by Mike Walton)

7. **Ben Vos's Via Kool-Aid F40PH:** I do most of my studies and research in little sketch books but when Ben and I met he explained to me that he does his research and studies on the computer. I never stop to be amazed at what modellers are doing on computers these days. Ben models in O scale and he writes: *This is my latest illustration. It is a Lionel F40PH that I painted to look like the VIA Kool-Aid F40PH including the Kool-Aid man's face and the Kool-Aid font.*



(Image by Ben Vos)

8. **CARM at the Kingston CRHA Rail O Rama:** Ian McIntosh was on hand to help out at the CRHA Rail O Rama and he writes: *On March 10 and 11 Steve Hoshel (CARM Promotions Manager and Ontario Midwestern Chapter Chair) went to the Kingston CRHA Rail O Rama show to promote CARM and CARM membership. Saturday he was aided by Jason and Rob Essery (London and Area Chapter Chair and Assistant Chair).*

*Sunday I helped at the table, handing out CARM flyers. I also wandered around the show, bought two books and took a few photos. All of the layouts were at least good and several were excellent. Before*



leaving Kingston I stopped at the VIA station for photos of it and two trains meeting and another a bit later.

Across from the CARM table was the ARK (Associated Railroaders of Kingston) multi-table display. ARK is the Kingston equivalent of a combined local CARM chapter and the Toronto Railway Supper Club. They meet once a month at a restaurant, with slideshows and discussions, and sometimes have other get-togethers.

This might have been the final Rail O Rama, but ARK is arranging a fall show on November 24 at a different location

(see [home.eol.ca/~ianmc/shows](http://home.eol.ca/~ianmc/shows) and click on "2018").

(Photos by Ian McIntosh)



9. **Ian Jameson's New (and Used) Cardboard Models:** I met Ian at the Lakeshore Modellers Flea market this spring doing the same thing I was – looking for second hand modeling items and treasures to take home and kitbash, re-finish, or just add to the layout as is. Ian writes: *I picked up these 9 cardboard stock built structures plus some spare parts at the Lakeshore Modellers Flee market today. Looking forward to finishing the details on the structures and adding them to my layout.*



(Photos by Ian Jameson)

10. **Andrew Malette's CNR S-3-a 3702, a Mikado:** In a few letters earlier, we read about Andrew beginning his new layout. Since then he has continued on the new layout but has also taken the time to do some modelling: *I have taken a break from building the layout and am on the road to completing CNR S-3-a 3702, a Mikado. So far, the tender modifications are complete save for the hooks on the frame for the chains to*



*the trucks. The boiler is 2/3 complete. I had to move the sandbox back because that is what the prototype did to make way for the top mounted Hancock boiler check. As you can see the cab is semi-vestibule and has had the rear of the roof modified.*



(Photos by Andrew Malette)

**11. CARM Booth at the Lakeshore Modellers Flea Market:** The CARM booth was at the Lakeshore Modellers Flea Market in April ably taken care of by William Waithe, Mike Walton, Peter Hughes, and James Rasor. We had a fun day, we picked up some nice items we needed, we ran into Gerald Harper and Ian Jameson along with many others, gave out some Junior Engineer Certificates to those who successfully completed the CARM switching layout, and just generally had a great time.



(Photo by James Rasor)

12. **CARM Toronto Chapter Layout Tour at Panther Hobbies:** In May CARM Members gathered at Panther Hobbies to see their N scale and HO scale layouts. Multiple trains were running and we had a wonderful personal tour of everything. You



really need to look closely and spend some time – there is so much going on. At the end of the tour many of us stocked up on more modelling supplies (hopefully, we will see some images of those acquisitions in the next letter!)



(Photos by James Razor)

13. **James Razor's Stone Styrofoam Bridge:** I wanted to try working with Styrofoam using a technique I saw on the internet. Willie Waithe's CN Weston Subdivision layout had a culvert crossing that was perfect for the job so I created this stone culvert bridge using pink Styrofoam, pencil, ruler, x-acto blade, wet-on-wet paint, some woodland scenic material, and 40 minutes later: Voila! A stone bridge!







(Photos by James Rasor)

14. **CARM's The Canadian, Summer 2018 Issue #64:** The new issue of *The Canadian* has been sent out in the mail - and it is also available online in full colour too (go to <http://www.caorm.org/>). This latest issue has the Gerald Harper's Chairman's Report, Chapter Reports, an article on the Rebuilding the Weston Sub, an article on LCD displays, an article on Ned Battie's HO Scale Railway Ream, Rolling Stock Weather with PanPastels, and more. Check out The Canadian for all its new articles in this new issue and take a look at the links on the webpage too.



In full disclosure to all our Toronto Chapter Members, I was held captive all spring by the company I run, and I missed the deadline to get our Toronto Chapter news in for publication in this new CARM issue. I apologise *profusely* to all of you and have taken steps to make sure I do not miss it again because we do have lots to celebrate and submit for the ongoing events and activities in the Toronto Chapter as a group and as members.

15. **Ian McIntosh's: 2018 Ontario and Other Train and Model Train Events Shows, Open Houses and Meets**  
<http://home.eol.ca/~ianmc/2018ONshows.htm>

If you are looking for more train related events in the up and coming months Ian edits and runs the wonderful Model Train and Train Events web page listed above. This website is a great place for planning your next train event for yourself, friends, or family. It's a very comprehensive "resource" page that lists the upcoming model train and railway events by each month for the coming year. This is a great *all-in-one-place* resource for anyone to help make future plans on things you may be missing out on!

16. **Giggle!** Sorry, I just have to run this photo again from one of Mike's past reports! It's the last time I promise!

*One operator reported. The Windermere crew certainly had a good time; there were few moments of inactivity [unless you count the Prussian G8.1 (BR55) locomotive which ran into the turntable pit]. Every train in Windermere spent some time on the Network, quite a few even returned for a repeat, after the locomotive went for a spin on the turntable.*



(Photo by Mike Walton)

*"What a great photo!"*

*I think this should be in next year's CARM Calendar! - James Rasor, Editor*

Have a good summer everyone, happy modelling, and send me your photos or reports!

\*\*\*\*\*

We would like to hear from everyone about what *CARM Toronto chapter members* have been working on!

1. **Send me a photo** of your:
  - present model railway project,
  - or your most recent prized purchase,
  - or your layout,
  - or your current scratch building project,
  - or your favourite rolling stock,
  - or your latest operating session,
  - or your research sketches,
  - or your custom track build,
  - or your first decoder install,
  - or your latest weathering,
  - or the most recent disaster that happened,
  - or your landscape project,
  - or your lighting project,
  - or the area you just pulled apart to start all over again!
  - or any model railway related item that you have been working on.
2. **Include a brief description**, 75 to 100 words maximum, or less if you want, that's okay too!
3. **Don't have a camera?** That's okay; just send me a 75 to 100 word description of what you are working on. You do not always need a picture, but we do want to hear from you!
4. **Send it to me at:** [CARMtoronto.jamesrasor@gmail.com](mailto:CARMtoronto.jamesrasor@gmail.com) .

I will then take the information, put it together with the other submissions, and issue it along with the other members' news every few months.

Let us know what **you** are working on, have fun, and ***stay in touch!***

Yours truly,

James Rasor, Secretary

**CARM Zone 2 - Toronto Chapter**

For more information on the *Canadian Association of Railway Modellers* go to <http://www.caorm.org/>