

**CARM Toronto Chapter - What are you working on?****July 29, 2019**

Hello everyone:

It's summer time and I missed the spring letter. I apologies to everyone for that and please excuse any editing issues as I am trying to get this out a little too quickly! My Outlook schedule also reminded me that CARM's next chapter submission is due this week. Wow, the time is flying and everyone has been busy.

The CARM Toronto spring was filled with member's layout tours, flea markets, shows, and many of our members submitting items that they are working on. So much to show, so grab your favorite iced tea, tea, coffee, or summer drink and enjoy reading about what some of our fellow chapter members have been doing over the last couple of months. When you are done reading, hopefully you will be inspired to send some of your stories and pictures – help us keep the CARM Toronto members involved and together throughout the year and send us something about *what you are working on?*

1. **John Rylaarsdam - Operating Rules!** John, like some of our other members, is doing research for his operations and he writes:

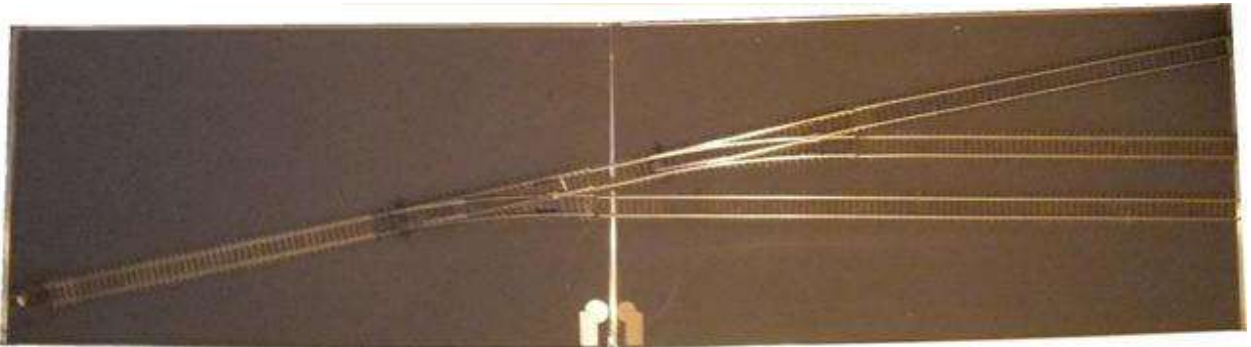
*I am currently working my way through the 1929 CN Operating Rules and CN Northern Ontario Division Employee Timetable from September 1929 (and comparing with NOD ETTs for 1926 and 1935), to see if I can come up with a plan which will satisfy my visual and operational design goals (and be achievable). To get there I will also need to augment my collection of maps (and, I hope, photographs), and gather information about operations and equipment in North Bay for both CP and the T&NO railways. That is a very sketchy summary. Writing it for you has made me think I need to revive some of my project management skills from 20-30 years ago, and produce a proper document (at least for myself) that sets out my design objectives, constraints, etc. Thank you for getting me to put something on paper instead of carrying it all around in my head.*

This is a great “What are you working on?” subject: *the beginning!* I agree with John; putting writing or sketches down on paper really helps me work things out too. Hopefully, John, will send us more progress reports and will update us with some images as he continues.

2. **Ian McIntosh – Portable Layout & Kingston Rail O Rama:** Ian has been very busy and he writes in to update us about two events:

*In March Ian McIntosh and Steve Hoshel (CARM Promotions Manager) went to the Kingston Rail O Rama show to promote CARM memberships. Steve brought the Ontario Midwestern Chapter's portable layout and dozens of people enjoyed operating it and getting a Junior Engineer certificate. Bruce Leckie from the National Capital Chapter and a friend were also there with their new portable layout.*

*I've started building a very small (1'x4' folding to 1'x2' 2.5" thick) very lightweight (aluminum frame, 1" styrofoam ground) portable layout, and it's about half done. The photo shows track laid on the base temporarily. In the bottom middle is one homemade hinge part and the template for making three more (two hinges). The hinges will mount vertically one the sides at the joint between the left and right halves.*



I am looking forward to seeing this when it is done! Keep sending updates Ian!  
(Photo by Ian McIntosh)

- Hal Huhn – Layout tour!** On Saturday, April 6, 2019, CARM had the opportunity to meet and see Hal's Maerklin three tracks layout that we wrote about in the last CARM letter. His layout runs on several levels and there are wonderful accessories to see everywhere you look, from crossing arms, to a turntable, to catenary wire systems, landscaping, and buildings. Hal has just been resurrecting this layout and he even has plans for some renovations to add more track to it. Hal is also heading up a group to help connect more CARM members that model "International Layouts" so if you model and operate an international layout, let us know!



(Photo by Richard Morrison of James Rasor and Hal Huhn and his layout)

4. **David Woodhead's Madoc and North Hastings layout:** Sometimes nothing lines up and you miss going, and that's unfortunately what happened and I missed seeing David's layout... and I have no pictures, so I apologize again to everyone else who did not make it and that I have no images for this letter. But, that said, many CARM members did make it! Willie's invitation for the tour noted that:

*The Madoc and North Hastings depicts a three foot gauge railway in Ontario around the turn of the last century. It's a point-to-point design built in On3 around the walls of a room about 16'x23', and features hand-laid track and DCC sound in all the motive power. Trains are short but full switch list operation is run from time to time. There are three towns modelled, with two additional branches which are simply holding tracks for single-train staging. A Lenz DCC system is used, and rolling stock is a mix of resin, plastic and wood kits and modified brass locomotives with some On30 that has been widened or re-trucked to On3.*

5. **Hal Huhn begins renovations:** After we had a wonderful tour of Hal's layout he then sent us this note and photos a few weeks later: Hal writes:

*Hi James,*

*I have attached two pictures. I am removing an old backdrop wall. This will allow me several extra tracks. I am also planning to build a small German town. The buildings will be halved against the backdrop. To achieve this, I am planning to cut several buildings in half.*

I am looking forward to seeing Hal's layout again and the progress on the expansion!



(Photo by Hal Huhn)

6. **Richard Morrison – Layout tour!** We visited Richard’s wonderful layout on March 30, 2019 to see the new changes that he has made, including the new staging tracks he wrote about in the last letter. His layout is a great example how, like Hal Huhn’s layout, you do not need a large space to have a great layout with excellent craftsmanship and still have so much to see and run trains on. I really admired this perspective section where Richard blended his HO scale buildings in the foreground, with n-scale buildings on the hill, then a photo graphic image of smaller, similar type buildings at the top of the hill, and finished with his cloud images.



(Photo by James Rasor)

7. **Richard Morrison – Modular layout!** Richard has also been working on a modular layout for the Scarborough Model Railroaders, and he writes:

*I have just finished modifying my earlier version of the Veigh-Gann Packing Co., made from a Walthers Champion Packing Co. kit. The finished complex will be displayed on the modular layout taken to train shows by the Scarborough Model Railroaders. Since the modules are packed away between shows, I had to wait until the layout was set up to measure the space for the complex, then build it to fit. I finished the complex in time for the Bradford Train Show in January, where I discovered my measurements were wrong. (Who would have expected a double-track spur on a module?) I had to completely rebuild the stockyard and extend the passageway. The structure is due to appear at the Midland Train Show May 25-26. If it still doesn't fit, we sue the architect.  
Richard Morrison*



(Photo by Richard Morrison)

8. **Willie Waithe – Trackwork:** Willie's new CN Weston Subdivision layout is coming along wonderfully and he writes this update:

*I am working on trackwork. I just finished replacing another Micro Engineering turnout (bad) with an Atlas (good) in Rexdale east and am now installing a crossover in Martin Grove (photograph attached). The cross over and the removal of the curved turnout entering the area will make for interesting switching of Dorney's Meat Packing and Loeb Foods.*



I've see the finished crossing and it looks great!  
(Photo by Willie Waithe)

9. **Willie Waithe – Basics of computer-generated switch lists:** along with several CARM member layout tours this spring, Willie reports:

*In addition to any meetings, layout visits etc. On Tuesday, 26 March, I held an evening session on model railway operations and the basics of computer-generated switch lists. Attending were: Malcolm Back, David Dunning, Bernard Hellen and John Rylaarsdam. We had an interesting discussion of the various methods of car forwarding and the attendees were very interested in the details of constructing a data base using Ship It.*

10. **CARM-TC table at the LMRA Flea Market:** Ian McIntosh reported on the CARM-TC table at the show this spring on April 14, 2019, noting:

*“Four members of the Toronto Chapter (Willie Waithe, Mike Walton, Richard Morrison and Ian McIntosh) ran the CARM-TC table at the LMRA Flea Market Sunday April 14. Gerald Harper was also there with his own tables selling surplus equipment. We talked to dozens of people and handed out about 3 dozen CARM flyers and about 2 dozen London Super Meet flyers. There were no immediate signups but one renewal is definite, 2 to 5 new members are high probability and another 10 or so medium probability. We also had fun and made a few purchases.*



Behind the table are Mike Walton and Richard Morrison, Gerald Harper is in front.  
(Photo by Ian McIntosh)

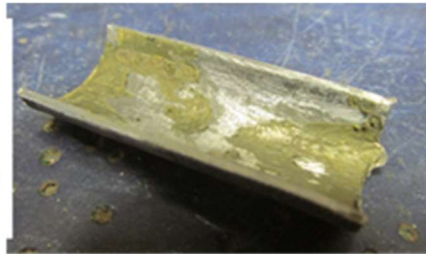


11. **Mike Walton's 207th Operating Session.** Mike again annotates his operation reports wonderfully with images and texts and this time part of his report had this great section regarding traction improvement. Mike writes the following about his **"Shunting Improvements:** *We found the Hornby L&YR Pug and the MSC Sentinel locomotives lacked the desirable traction to shunt the longer trains around the yard. I therefore made the following improvements.*

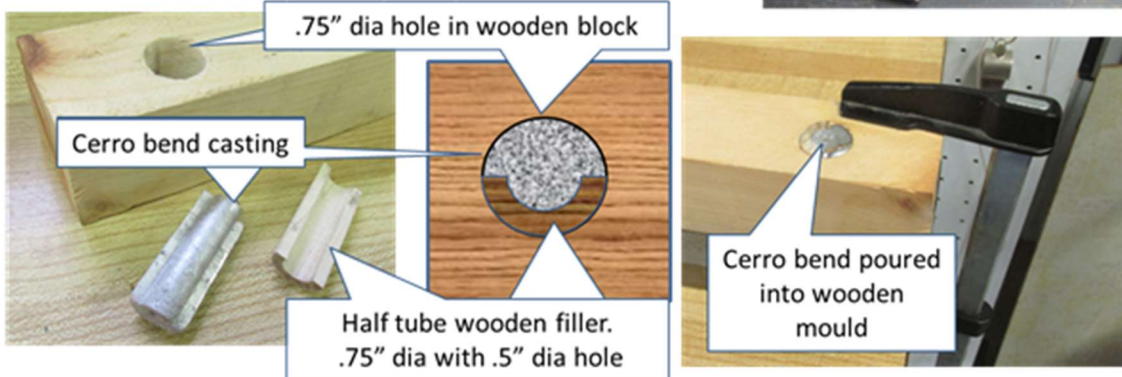
12.

**A. The Pug's weight was increased from 90 gm to 130 gm, see details below.**  
***Pug - Boiler Weight replacement.***

Wrapping Brian Fayle's lead sheeting around the existing weight didn't work because the sheet was too thick. Also the existing weight was short by about .3"



Therefore I decided to buckle down and cast a weight from scratch, quite easy really ☺.

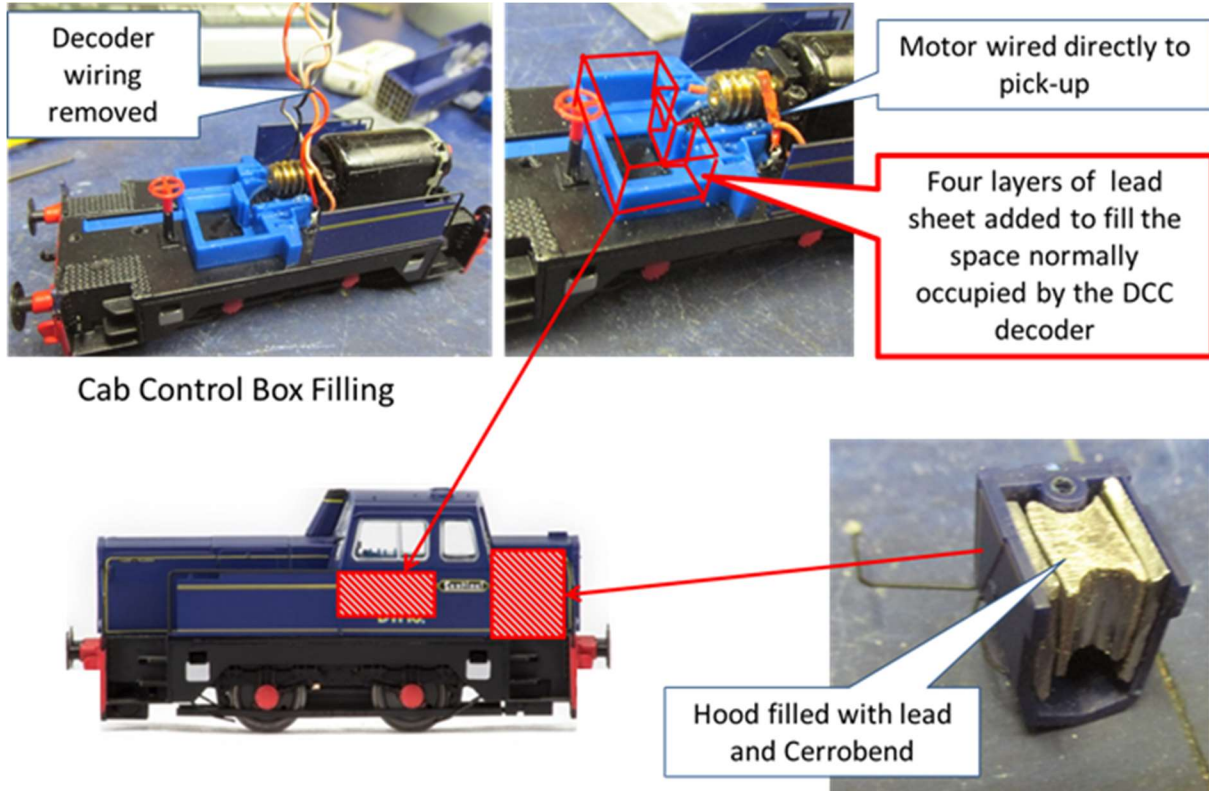


### ***Pug - Adding weights inside the Cab***



All this lead came from an old x-ray room and was supplied by Brian Fayle

**B. The Sentinel's weight was increased from 105 gm to 135 gm, see details below.**



### **Testing.**

*On test both locomotives were able to manoeuvre 15 wagons around the yard with a little difficulty, I think this will cover all shunting moves required*



(All photos and graphics by Mike Walton)

13. **Dave Fleming – John Street Roundhouse’s Nova Scotia:** I like the fact that our CARM members work on so many different scale models. Dave Fleming volunteers at the Toronto Railway Museum with the restoration crew and has been working at 1:1 scale on the restoration of the *Nova Scotia* car. They have actually just finished restoring the end platform and David sends us two email updates and pictures of the end platform gates while they were under restoration:

*Hello James,*

*No modelling unfortunately other than fixing some track problems on the Midland modular club layout and putting a mirror finish on Nova Scotia brass railing guards which will be installed at the other end of Nova Scotia facing the museum.*

*Working on Nova Scotia outdoor platform side gates. Same gate, two different angles.*



(Photos by Dave Fleming)

14. **James Razor – A GP40 meets its end:** I've been working on the CN maintenance yard for Willie's CN Weston Subdivision layout for a while now and I made this little "Imagineering" scene about the end of a GP40's life as it gets pulled apart for parts. It's made from two "second hand" GP40 shells, parts from scrap boxes, some very sharp jeweler's saws, some dry brushing, and a lot of fun. I completed it by installing an Evan's Design LED welder light set inside the rear end of the engine so that the welder's light flickers through the open doors from inside. Anyone need GP40 parts?



15. **Ian McIntosh's: 2019 Ontario and Other Train and Model Train Events Shows, Open Houses and Meets:** <http://home.eol.ca/~ianmc/2019ONshows.htm>  
If you are looking for more train related events in the up and coming months Ian edits and runs the wonderful Model Train and Train Events web page listed above. This website is a great place for planning your next train event for yourself, friends, or family.

*Event Count so far: 24 plus 42 frequent events, clubs and ongoing activities.*

*Last Update: Saturday December 29, 2018.*

*Recent Changes (approximately within the last month):*

*January 12-13*

*March 3, 16, 23*

*November 16-17*

It's a very comprehensive "resource" page that lists the upcoming model train and railway events by each month for the coming year. Look at the activity count shown

above to date. This is a great all-in-one-place resource for anyone to help make future plans on things you may be missing out on that I recommend very highly!

\*\*\*\*\*

That's our spring and summer addition of what some of our CARM chapter members are currently working on.

We would like to hear from everyone about what *CARM Toronto chapter members* have been working on so please do send me a photo and a quick description about what you are currently working on and we'll get it in the next email letter of the ***CARM Toronto Chapter - What are you working on?***

1. **Send me a photo** of your:
  - present model railway project,
  - or your most recent prized purchase,
  - or your layout,
  - or your current scratch building project,
  - or your favourite rolling stock,
  - or your latest operating session,
  - or your research sketches,
  - or your custom track build,
  - or your first decoder install,
  - or your latest weathering,
  - or the most recent disaster that happened,
  - or your landscape project,
  - or your lighting project,
  - or the area you just pulled apart to start all over again!
  - or any model railway related item that you have been working on.
  - It doesn't have to be perfect, professional, etc., etc., etc., just something you had fun with and want to share in this hobby we share together.
2. **Include a brief description**, 75 to 100 words maximum, or less if you want, that's okay too!
3. **Don't have a camera?** That's okay; just send me a 75 to 100 word description of what you are working on. You do not always need a picture, but we do want to hear from you!



4. **Send it to me at:** [CARMtoronto.jamesrasor@gmail.com](mailto:CARMtoronto.jamesrasor@gmail.com) .

I will then take the information, put it together with the other submissions and issue it in the next email letter along with the other members' news every few months.

Let us know what **you** are working on, have fun, and ***stay in touch!***

Yours truly,

James Razor, Secretary

**CARM Zone 2 - Toronto Chapter**

For more information on the *Canadian Association of Railway Modellers* go to <http://www.caorm.org/>